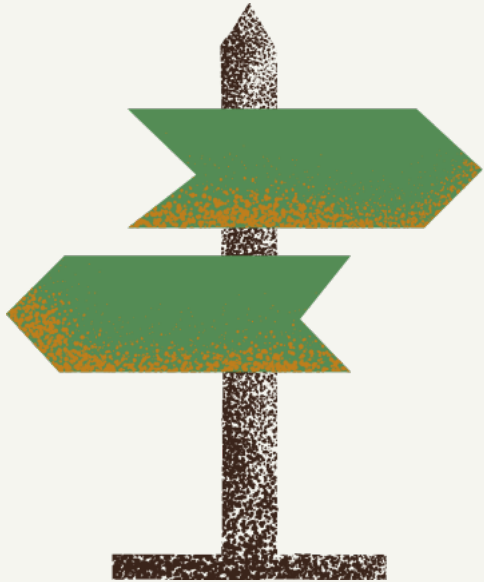
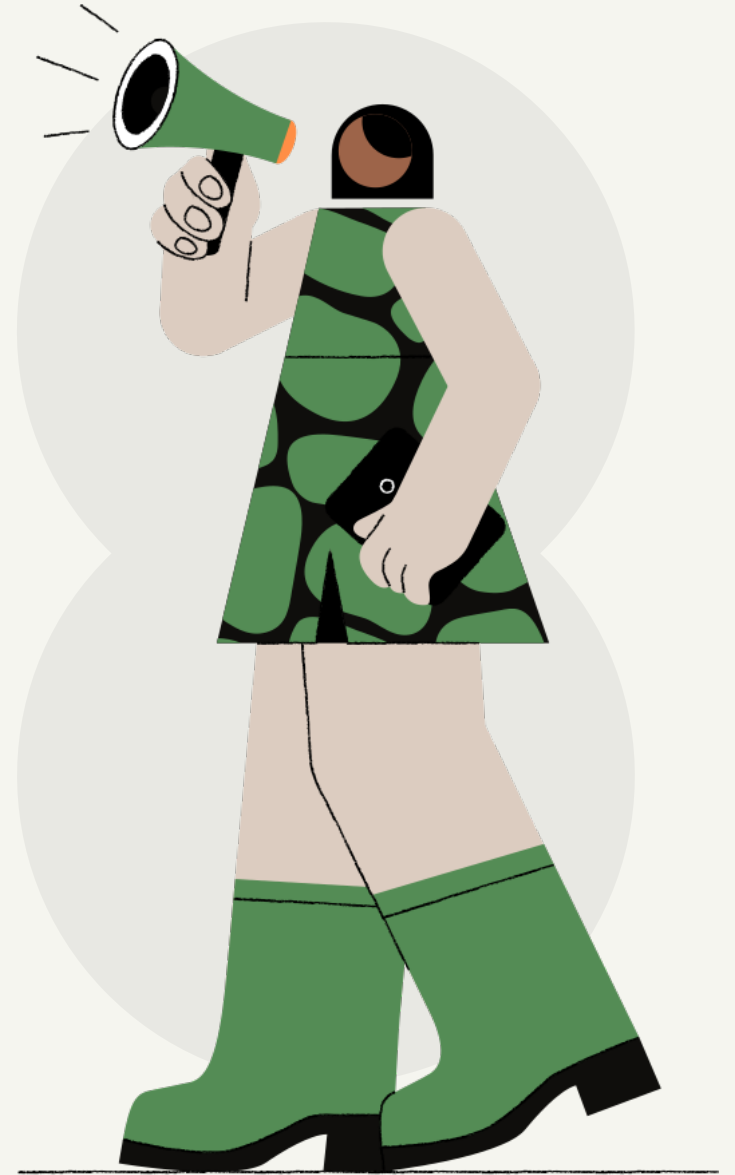


TODAY WE WILL BE TALKING ABOUT:

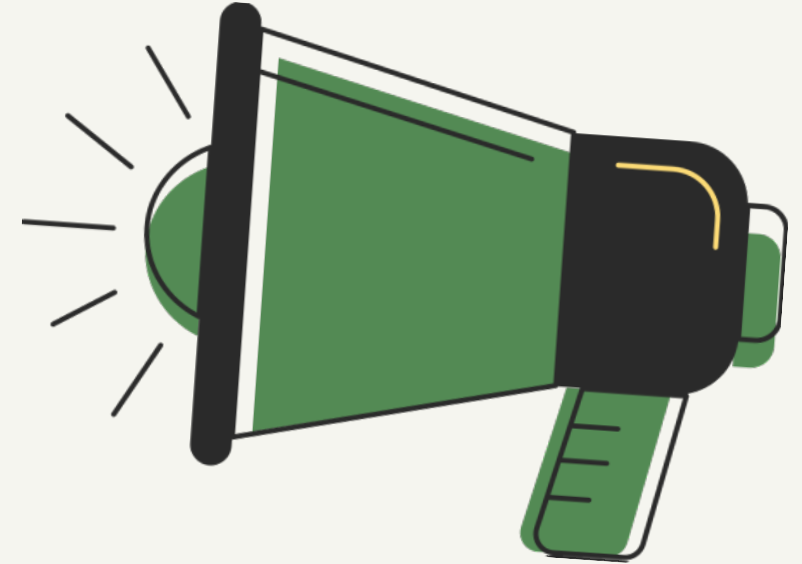


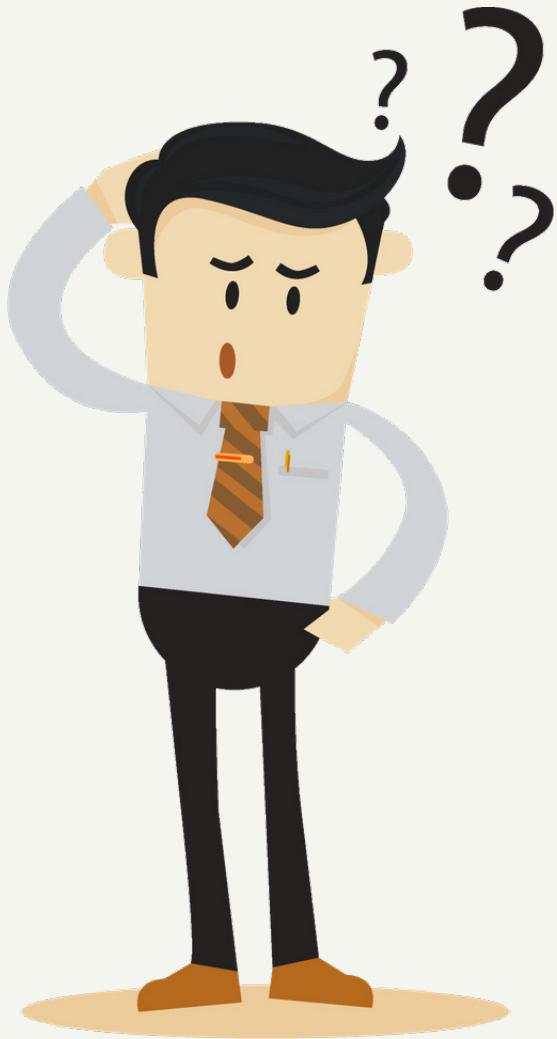
- Causes of hate speech
- Who is targeted by hate speech?
- Categories of hate speech
- Hate speech/Hate crime
- Why is hate speech harmful?
- What you can do?
- Narratives



CAUSES OF HATE SPEECH

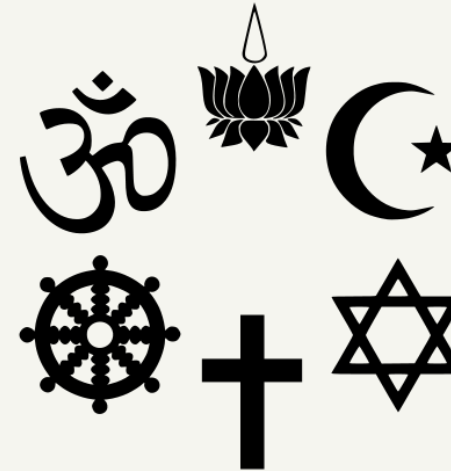
- Negative stereotypes, prejudices, and narratives
- Historically - many groups have discriminated against others - discrimination as part of a system of oppression;
- Class differences, gender relations and colonialism,
- Ideas emerged that one group was superior/inferior to others and systems were put in place to justify and sustain these unequal social relations
- Human fear of losing their own security, identity and freedom





WHY DO PEOPLE PRODUCE HATE SPEECH?

- Sometimes hateful speech can reflect a person's genuine political beliefs or distaste for a group of people
- Hate speech can also be a product of lack of knowledge, experience, or reflection if the speakers come from an environment where slurs are commonplace
- Speakers may be unfamiliar with members of a targeted group
- They may also lack knowledge about the relevant facts



WHO IS TARGETED BY HATE SPEECH?



CATEGORIES OF HATE SPEECH

1

Hate speech' that must be prohibited

2

Hate speech' that may be prohibited

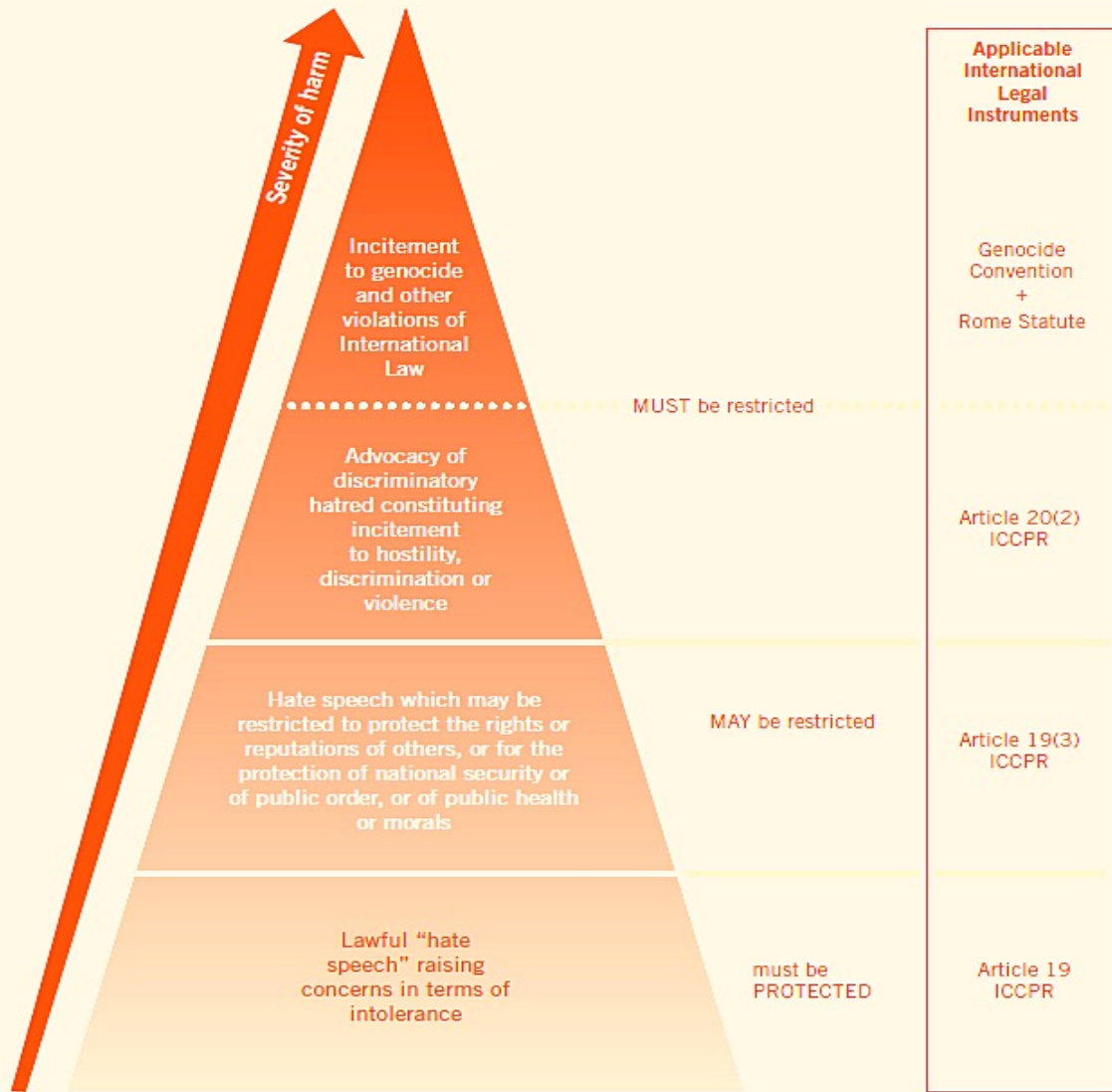
3

Lawful 'hate speech'

ACCORDING TO INTERNATIONAL COVENANT ON CIVIL AND POLITICAL RIGHTS



The 'Hate Speech Pyramid'



Hate speech' that must be prohibited

- Direct and public incitement to genocide
- Prohibition of incitement to other discriminatory violations of international criminal law
- Any advocacy of discriminatory hatred that constitutes incitement to discrimination, hostility or violence

Hate speech' that may be prohibited

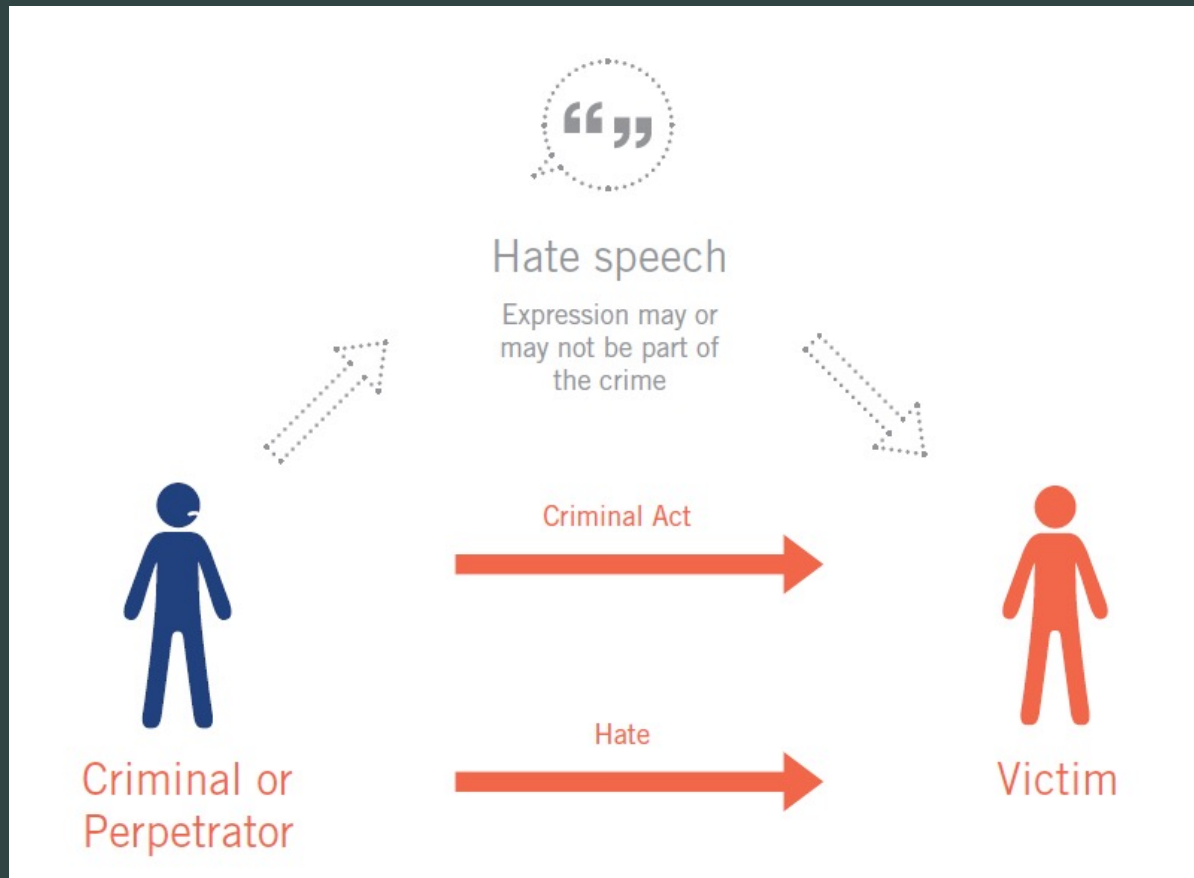
- Hate speech that includes threats of violence, harassment, and attacks

Lawful 'hate speech'

* ICCPR (International Covenant on Civil and Political Rights)



Are hate speech and hate crime the same



Hate speech and hate crimes are often conflated and used interchangeably, but they should be distinguished.

While all 'hate speech' is a cause for concern, it will not always constitute a criminal offence, and therefore is not a "hate crime".



WHY IS HATE SPEECH HARMFUL?



- Hate speech can harm individuals, communities and societies - targets of hate speech can experience negative emotional, mental, and physical consequences
- These can include low self-worth, anxiety, fear for their lives, and even self-harm or suicide
- Hate speech harms our relationships with each other. It interferes with our ability to communicate with others and to empathize
- Online hate speech has resulted in serious offline harms
- Hate speech harms everyone.





WHAT YOU CAN DO?

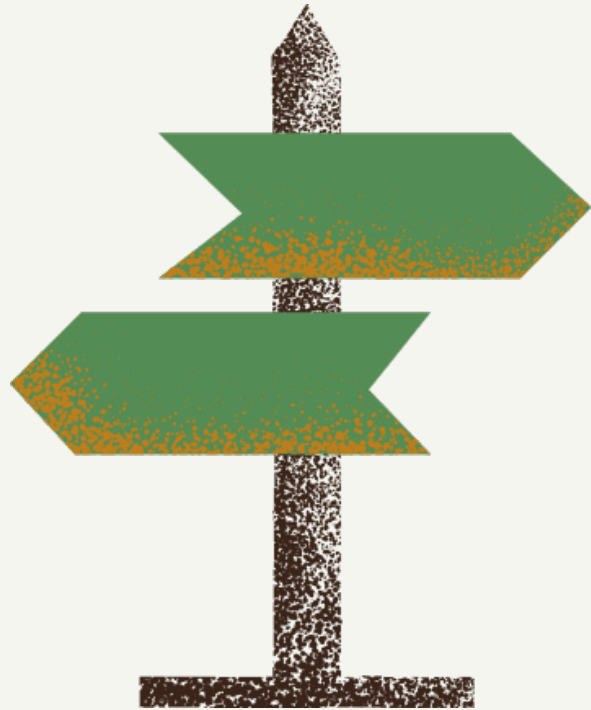
- Learn, learn, learn!
- Build your own integrity!
- React!
- Report!
- Protect!
- Take care of yourself!



Aim to reach:

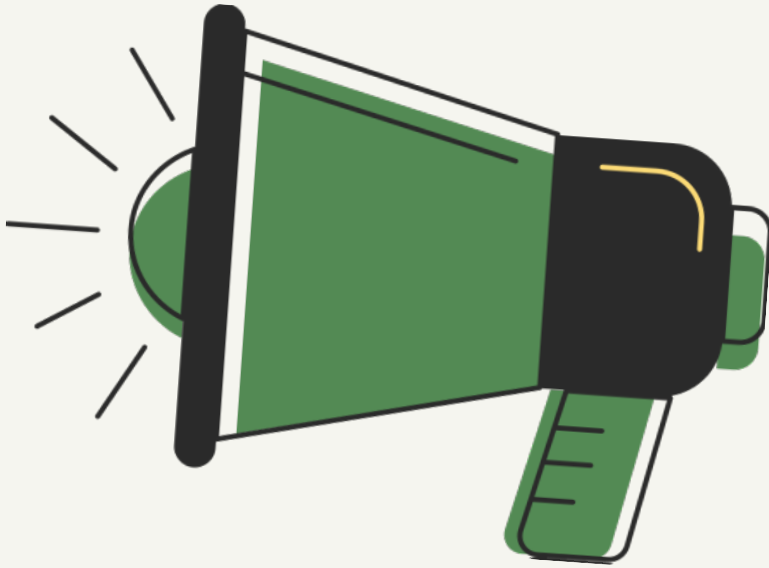
- Those who may or already sympathise with extremist views, preventing their further involvement
- Those who already hold extremist views, supporting individuals in changing their views and behaviour

ALTERNATIVE NARRATIVES



- Strengthen positive, inclusive and constructive ideas and aim to:
- Reach the whole population
- Including producers of hate speech who may be able to become acquainted with a new narrative altogether

NARRATIVES



- Counter and alternative narratives combat hate speech by discrediting and deconstructing violent narratives that justify it
- Narratives need to connect to people's understandings and the contexts of their specific lives, creating new meanings and relating to their emotions and needs
- Often this can be done through the use of humour and satire, appealing to people's emotional connections to the subject, facilitating spaces of direct personal contact with people with different perspectives



THANK YOU 😊



ALTerHate



alter_hate



ALTer_Hate

